

BEFORE THE BOARD OF STEVENS COUNTY COMMISSIONERS

IN THE MATTER OF STEVENS
COUNTY'S CAPITAL FACILITIES PLAN

Resolution No. 74-2013

ADOPTING THE 2014-2019 CAPITAL
FACILITIES PLAN

WHEREAS, the Board of County Commissioners for Stevens County finds that notice was provided and public hearings held regarding the fiscal year 2014 budget and 2014-2019 Capital Facilities Plan on December 2, 2013; December 16, 2013 and December 23, 2013; AND

WHEREAS, the Board adopted the 2014 budget on December 23, 2013, and continued the hearing to December 30, 2013 for final review and update of the 2014-2019 Capital Facilities Plan.

NOW, THEREFORE, IT IS HEREBY RESOLVED AND ORDERED:

The 2014-2019 Capital Facilities Plan, as set forth in Exhibit A attached hereto and incorporated herein, is approved and adopted.

Passed by the Board of Stevens County Commissioners meeting in regular session at Colville, Washington, by the following vote, then signed by its membership and attested to by its Clerk in authorization of such passage the 30th day of December, 2013.

3 YEA; 0 NAY; 0 ABSTAIN; and 0 ABSENT

BOARD OF COUNTY COMMISSIONERS OF
STEVENS COUNTY, WASHINGTON



Chairman Don Dashiell

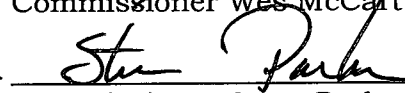
Attest:



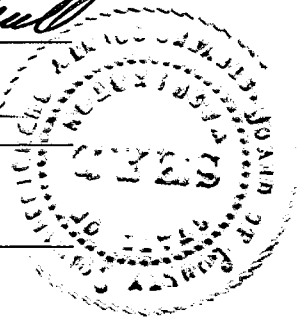
Commissioner Wes McCart



Polly Coleman
Clerk of the Board

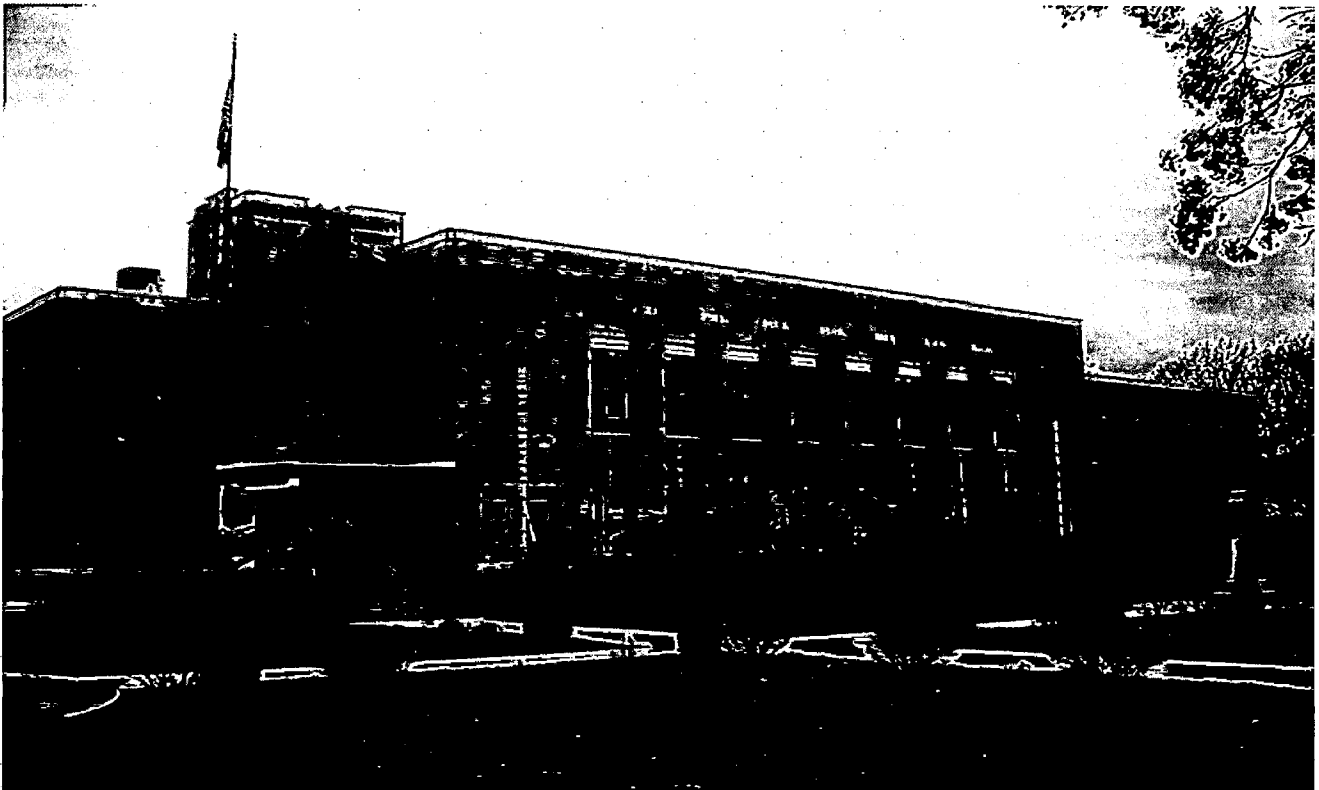


Commissioner Steve Parker



Stevens County Capital Facilities Plan and Six Year Financing Plan

2014-2019



1 Introduction

The Capital Facilities Element is a requirement of the Growth Management Act to attempt to ensure the coordination of the County's physical capital facilities planning with sound fiscal planning. The requirements of this element are:

- An inventory of existing capital facilities/public facilities/public services
- A forecast of the future needs for capital facilities/public facilities/public services
- Proposed locations and sizes or capacities of expanded or new capital facilities/public facilities/public services
- At least a six-year plan that will finance capital facilities/public facilities/public services
- A requirement to reassess the land use element of the Stevens County Comprehensive Plan if funding falls short of meeting existing needs and to ensure that the land use element, capital facilities plan element, and financing plan within the capital facilities plan element are coordinated and consistent.

Previous capital facilities plans have limited inventory and analysis to government-operated facilities. This plan includes many facilities that are privately owned or managed by a special purpose district in an attempt to paint a more accurate picture of existing and future capital facilities in Stevens County.

2 Definitions

Definitions

Capital facility: a structure, improvement, or other major asset, including land, fixtures and related equipment that has a useful life of at least 10 years and do not include facilities leased for less than ten years. Capital facilities are provided by or for public purposes and services including, but not limited to the following:

1. Correctional facilities
2. Government offices
3. Roads
4. Recreational facilities
5. Solid waste facilities
6. Utilities
7. Public facilities

The capital facilities listed above include necessary ancillary and support facilities.

Capital improvement: a project to create, expand or modify a capital facility.

Level of service standards: quantifiable measures of public services that the County provides to its present and future residents and businesses. They allow the County to assess deficiencies in the services it provides and define minimum threshold standards that should be met by existing and new service facilities to avoid under-served growth.

Public facility: streets, roads, highways, sidewalks, street and road lighting systems, traffic signals, domestic water systems, storm and sanitary sewer systems, parks and recreational facilities, and schools.

Public services: include fire protection and suppression, law enforcement, public health, education, recreation, environmental protection, and other governmental services.

3 Inventory

This inventory is organized by urban growth area and then by facility type. Non-county facilities are included in this inventory and not separated from county facilities.

Public Safety Facilities				
Facility/Responsible Agency	Service Area	Description	Capacity	LOS
Martin Hall Juvenile Detention Facility/Superior Court – Juvenile Dept.	Countywide	Inter-local cooperative facility with eight other jurisdictions	44 beds	N/A
Stevens County Jail/Stevens County Sheriff	Countywide	Courthouse basement	40 beds	N/A
911 Dispatch/Stevens County Sheriff	Countywide	E-911 and dispatch services	N/A	N/A
Warehouse, Sheriff Vehicle and Evidence Storage	Countywide	Evidence, Sheriff vehicle and Sheriff equipment storage	N/A	N/A
New Ambulance Facility (425 West 5 th , Colville)/Stevens County Sheriff	Countywide	Volunteer ambulance garage, offices, storage, training facility and Auditor's elections	N/A	N/A
Police Station/Stevens County Sheriff	Countywide	Station for law enforcement services	55 Deputies for unincorporated 71 Deputies for total County population	1.68 Deputies/1000 Population

Government Structures/Offices				
Facility/Responsible Agency	Service Area	Description	Capacity	LOS
Courthouse/ Facilities and Maintenance Department	Countywide	Superior Court, Superior Court Clerk, Juvenile Dept., District Court, CASA, Coroner, Sheriff, Auditor, Assessor, Treasurer, Information Svc., Prosecuting Atty., Facilities/Maintenance	N/A	N/A
Former Avista Building	Countywide	County Commissioners	N/A	N/A

Government Structures/Offices

Facility/Responsible Agency	Service Area	Description	Capacity	LOS
Courthouse Annex	Countywide	Land Services including Planning and Building	N/A	N/A
Old Ambulance Building	Countywide	<i>Being remodeled for I.S. Dept in 2014</i>	N/A	N/A
Public Works Administration Building/Public Works Department	Countywide	Public Works	N/A	N/A
Northeast Washington Alliance Counseling Services (NEWACS)	Serving Ferry, Lincoln and Stevens Counties	NEWACS – behavioral health outpatient facility	N/A	N/A
Lee Smutzler Crisis Stabilization Facility; 150 E. Glen; Colville, WA (NEWACS)	Countywide plus Ferry, Lincoln & Pend Oreille Counties	Mental Health Crisis Facility + transitional housing for persons with mental illness	10 (6 in Crisis side; 4 in apartments)	14 days at Crisis side; 180 days in apartments
<i>NEWACS Branch Office; 301. E. Clay, Chewelah WA</i>	<i>Serving Ferry, Lincoln and Stevens Counties</i>	<i>NEWACS – behavioral health outpatient facility</i>	<i>N/A</i>	<i>N/A</i>
<i>NEWACS Branch Office; 6176B Hwy 291, Nine Mile Falls WA</i>	<i>Serving Ferry, Lincoln and Stevens Counties</i>	<i>NEWACS – behavioral health outpatient facility</i>		
<i>NEWACS Branch Office; 65 N. Keller, Republic WA</i>	<i>Serving Ferry, Lincoln and Stevens Counties</i>	<i>NEWACS – behavioral health outpatient facility</i>	<i>N/A</i>	<i>N/A</i>
<i>NEWACS Branch Office; 1211 Merriam, Davenport WA</i>	<i>Serving Ferry, Lincoln and Stevens Counties</i>	<i>NEWACS – behavioral Health outpatient facility</i>	<i>N/A</i>	<i>N/A</i>
Colville Shop/Public Works Department	Colville/Countywide	Road maintenance and construction facilities	N/A	N/A
Northport Shop/Public Works Department	Northport/Countywide	Road maintenance and construction facilities	N/A	N/A
Pleasant Valley Shop/ Public Works Department	Pleasant Valley/Countywide	Road maintenance and construction facilities	N/A	N/A
Chewelah Shop/ Public Works Department	Chewelah/Countywide	Road maintenance and construction facilities	N/A	N/A
Williams Valley Shop/ Public Works Department	Williams Valley/Countywide	Road maintenance and construction facilities	N/A	N/A

<i>Government Structures/Offices</i>				
Facility/Responsible Agency	Service Area	Description	Capacity	LOS
Hunters Shop/ Public Works Department	Hunters/Countywide	Road maintenance and construction facilities	N/A	N/A
Scoop Mountain Communications Site	South Stevens County	Tower facility for radio and emergency communications	N/A	N/A

<i>Recreation Facilities</i>				
Facility/Responsible Agency	Service Area	Description	Capacity	LOS
Northeast Washington Fairgrounds/Board of County Commissioners	Countywide	Fairgrounds	N/A	N/A
Multipurpose (Ag and Trade) Building/Board of County Commissioners	Countywide	Conference, meeting/banquet facility and exhibition hall	N/A	N/A
<i>Stevens County Fish Hatchery, Colville</i>	<i>Countywide</i>	<i>Fish Hatchery</i>	<i>N/A</i>	<i>N/A</i>

<i>Transportation Facilities</i>				
Facility/Responsible Agency	Service Area	Description	Capacity	LOS
Roads/Public Works Department	Countywide	Paved: 662 miles Gravel: 828 miles	N/A	Minimum LOS: D
Sidewalks, traffic signals, lighting systems/ Public Works Department	Countywide	The county does not own or operate sidewalks, traffic signals, or lighting systems	N/A	N/A
Roads and Related Facilities/ Public Works Department	Countywide	See <i>Government Structures/Offices</i> above.		

<i>Solid Waste Facilities</i>				
Facility/Responsible Agency	Service Area	Description	Capacity	LOS
Landfill/Public Works Department	Countywide	County Landfill, tipping pit, recycling, offices and shop and maintenance areas	Adequate through 2030	N/A
Loon Lake Transfer Station (South County)/Public Works Department	South Stevens County/Countywide	Transfer station and recycling collection	Adequate through 2018	N/A
Park Rapids Transfer Station/Public Works Department	Park Rapids area/Countywide	Transfer station and recycling collection	Minor repairs may be necessary	N/A
Hunters Transfer Station/Public Works Department	Hunters Area/Countywide	Transfer station and recycling collection	N/A	N/A
Northport Transfer Station/Public Works Dpt.	Northport Area/Countywide	Transfer station and recycling collection	N/A	N/A
Recycling Center/Public Works Department	Countywide	Recycling	N/A	N/A

<i>Water Facilities</i>				
Facility/Responsible Agency	Service Area	Description	Capacity	LOS
49 Degrees North	49 Degrees North	Private water system for facilities owned by the ski resort.	Existing Connections: 2 Approved Connections: 28	Washington DOH guidelines for small water systems. Green Permit Category.
Addy/Public Utilities District	Addy Area	Water services	Existing Connections: 77 Approved Connections: 115	Washington DOH guidelines
Arden/Private	A portion of Arden	Water services	Existing Connections: 78 Approved Connections: 103	Washington DOH guidelines
Arden Hills Water/Private Association	A portion of Arden	Water services	Existing Connections: 25 Approved Connections: 31	Green Permit Category
Clayton/PUD	Clayton Area	Water services	Existing Connections: 135 Approved Connections: 150	Washington DOH guidelines
Deer Lake/PUD	Deer Lake Area	Water services	Existing Connections: 628	Washington DOH

Water Facilities				
Facility/Responsible Agency	Service Area	Description	Capacity	LOS
			Approved Connections: 700	guidelines
Hunters/Hunters Water District	Hunters Area	Water services	Existing Connections: 74 Approved Connections: 263	Washington DOH guidelines
Jump Off Joe/PUD	Jump Off Joe Area	Water services	Existing Connections: 65 Approved Connections: 74	Washington DOH guidelines
Long Lake/PUD	Long Lake Area	Water services	Existing Connections: 168 Approved Connections: 940	Washington DOH guidelines
Loon Lake/PUD	Loon Lake Area	Water services	Existing Connections: 654 Approved Connections: 1,084	Washington DOH guidelines
Suncrest/PUD	Suncrest Area	Water services	Existing Connections: 1,178 Approved Connections: 2,726	Washington DOH guidelines
Valley/PUD	Valley Area	Water services	Existing Connections: 70 Approved Connections: 90	Washington DOH guidelines
Waitts Lake/PUD	Waitts Lake Area	Water services	Existing Connections: 266 Approved Connections: 302	Washington DOH guidelines

Also see attached five-page list of Group A & B public water systems in Stevens County as of 12-16-2010 (CFPlan Pages 22-26).

Sanitary Sewer Facilities				
Facility/Responsible Agency	Service Area	Description	Capacity	LOS
Deer Lake/PUD	Deer Lake Area	Sanitary sewer facilities	Existing Connections: 742 Approved ERUs: 960	Per Stevens County Public Utility District Comprehensive Sewer Plan
Clayton/PUD	Clayton Area	Sanitary sewer facilities	Existing Connections: 121 Approved ERUs: 252	Per Stevens County Public Utility District Comprehensive Sewer Plan
Addy/PUD	Addy Area	Sanitary sewer facilities	Existing Connections: 86 Approved ERUs: 128	Per Stevens County Public Utility District Comprehensive Sewer Plan
Waitts Lake/PUD	Waitts Lake Area	Sanitary sewer facilities	Existing Connections: 298 Approved ERUs: 521	Per Stevens County Public Utility District Comprehensive Sewer Plan

Valley/PUD	Valley Area	Sanitary sewer facilities	Existing Connections: 76 Approved ERUs: 110	Per Stevens County Public Utility District Comprehensive Sewer Plan
Echo Estates/PUD	Echo Estates	Sanitary sewer facilities	Existing Connections: 23 Approved ERUs: 27	Per Stevens County Public Utility District Comprehensive Sewer Plan
Blackstone/PUD	Blackstone	Sanitary sewer facilities	Existing Connections: 11 Approved ERUs: 43	Per Stevens County Public Utility District Comprehensive Sewer Plan
Loon Lake/Loon Lake Sewer District	Loon Lake Area	Sanitary sewer facilities	Existing Connections: 781 Approved ERUs: 960	Per Stevens County Sewer District Comprehensive Sewer Plan

Stormwater Facilities

Facility/Responsible Agency	Service Area	Description	Capacity	LOS
No separate stormwater facilities exist in the County.				

Fire Facilities

Facility/Responsible Agency	Service Area	Description	Capacity	LOS
Fire District 1	Suncrest, Loon Lake, Clayton and surrounding areas	District Coverage Area: 375 sq mi Facilities: Station 1 – Clayton, Station 2 – Loon Lake, Station 3 – Twin Mountain, Station 4 – Tum Tum, Station 5 – Deer Lake, Station 6 – Ford, Station 7 – Springdale, Station 8 – Suncrest Apparatus: 9 engines, 1 attack, 6 tenders, 9 brush, 1 support, 4 staff rigs, 2 duty rigs, 1 maintenance truck Volunteers: 50 FT: 7 13,500 residents	N/A	Fire Insurance Rating: 7/8

Fire Facilities				
Facility/Responsible Agency	Service Area	Description	Capacity	LOS
Fire District 2	Hunters and surrounding area	District Coverage Area: 125 sq mi Facilities: F210 Hunters, F220 Harvey Creek, F230 Fruitland, F240 Enterprise Apparatus: 1 engines, 2 tenders, 5 brush Volunteers: 25 FT: 0 2500 residents served	N/A	Fire Insurance Rating: 9
Fire District 3	Colville and surround area	District Coverage Area: 6 sq mi Facilities: Station 1 – located in the City of Colville Apparatus: 3 tenders, 2, quick response Volunteers: None FT: District contracts with City of Colville who has 32 firefighters	N/A	Fire Insurance Rating: 8
Fire District 4	Valley, Chewelah and surrounding area	District Coverage Area: 100 sq mi Facilities: Station 41 – Valley Station, Station 42 – Waitts Lake Station, Station 43 – Chewelah City Fire Hall, Station 44 – Moser Road Station, Command Vehicle, Waits Lake Ambulance/Support Unit Apparatus: 4 engines, 3 tenders, 3 brush, 1 support, 1 command Volunteers: 28 FT: 0	N/A	Fire Insurance Rating: 8
Fire District 5	Addy and surrounding area	District Coverage Area: 75 sq mi Facilities: 4 Stations Apparatus: 4 engines, 7 tenders, 4 brush, 1 support Volunteers: 28 FT: 0	N/A	Fire Insurance Rating: 8

Fire Facilities				
Facility/Responsible Agency	Service Area	Description	Capacity	LOS
Fire District 6	Marcus, Kettle Falls and surrounding area	District Coverage Area: 29 sq mi Facilities: Kettle Falls Station, Station 1, Station 2 Apparatus: 5 engines, 2 tenders, 4 brush, 1 support (suburban), 1 1 st response Volunteers: All – city Fire Department Response time: 3-5 minutes 4,000 people served	N/A	Fire Insurance Rating: 8
Fire District 7	Arden and surrounding area	District Coverage Area: 68 sq mi Facilities: Station 71, Station 72, Station 73, Station 74 Apparatus: 14 engines, 3 tenders, 2 BLS aid units Volunteers: 38 FT: 0	N/A	Fire Insurance Rating: 8
Fire District 8	Unincorporated Stevens County	District Coverage Area: 37 sq mi Facilities: Orient Station, Barney's Junction Station, Hagg's Cove Station, Barstow Station, Tipton Station Apparatus: 4 engines, 5 tenders, 1 pump, 8 brush, 1 transport, 3 rescue, 3 support Volunteers: 21 FT: 0	N/A	Fire Insurance Rating: 8
Fire District 9	Unincorporated Stevens County	District Coverage Area: 8 sq mi Facilities: One Station Apparatus: 3 engines, 2 tenders, 2 boats Volunteers: 26 FT: 0	N/A	Fire Insurance Rating: 9
Fire District 10	Unincorporated Stevens County	District Coverage Area: 34 sq mi Facilities: Smackout Station Apparatus: 3 engines, 1 tender Volunteers: Not available FT: 0	N/A	Fire Insurance Rating: 9

Fire Facilities				
Facility/Responsible Agency	Service Area	Description	Capacity	LOS
Fire District 11	Unincorporated Stevens County	District Coverage Area: 100 sq mi Facilities: One Station Apparatus: 2 engines, 3 tenders, 1 brush truck, 2 quick response Volunteers: 25 FT: 0	N/A	Fire Insurance Rating: 8
Fire District 12	Unincorporated Stevens County	District Coverage Area: 75 sq mi Facilities: Rice Station, Gifford Station Apparatus: 2 engines, 1 attack, 2 tenders, 5 brush, 2 rescue Volunteers: 21 FT: 0	N/A	Fire Insurance Rating: 8

Library Facilities				
Facility/Responsible Agency	Service Area	Description	Capacity	LOS
Chewelah Public Library/Chewelah Library District	Countywide	Staffed by 4 part time employees and a part time student assistant. Open 60 hours per week and has a collection of 28,000 items. Internet for patrons, serving Valley/Addy/Co people (5,000 patrons)	At capacity. Must discard books or add shelves to expand capacity.	Library District to establish its own level of service
Colville Public Library/Stevens County Rural Library District	Countywide	<i>No response</i>		Library District to establish its own level of service
Hunters Public Library/Stevens County Rural Library District	Countywide			Library District to establish its own level of service
Kettle Falls Public Library/Stevens County Rural Library District	Countywide			Library District to establish its own level of service

Library Facilities				
Facility/Responsible Agency	Service Area	Description	Capacity	LOS
Lakeside Community Library/Stevens County Rural Library District	Countywide			Library District to establish its own level of service
Library of the Lakes/Stevens County Rural Library District	Countywide			Library District to establish its own level of service
Northport Community Library/Stevens County Rural Library District	Countywide			Library District to establish its own level of service
Onion Creek Library Station/Stevens County Rural Library District	Countywide			Library District to establish its own level of service
Ford Library Station/Stevens County Rural Library District	Countywide			Library District to establish its own level of service
Administration Office/Stevens County Rural Library District	Countywide			Library District to establish its own level of service

School Facilities				
Facility/Responsible Agency	Service Area	Description	Capacity	LOS
Gess Elementary/Chewelah School District 36	Addy, Chewelah and surrounding area	District Area: 28 sq mi Enrollment: 340	500 Students	Student/Teacher: 21 to 1
Jenkins Middle School/Chewelah School District	Addy, Chewelah and surrounding area	District Area: 28 sq mi Enrollment: 225	330 Students	Student/Teacher: 23 to 1
Jenkins High School/Chewelah School District 36	Addy, Chewelah and surrounding area	District Area: 28 sq mi Enrollment: 423	450 Students	Student/Teacher: 23 to 1
Homelink/ Chewelah School District 36	Addy, Chewelah and surrounding area	District Area: 28 sq mi Enrollment: 56	60 Students	N/A
Columbia High School and Elementary/Columbia School District 206	Hunters and surrounding area	District Area: 24 sq mi Enrollment: 210	280 Students	Student/Teacher: 11 to 1

School Facilities				
Facility/Responsible Agency	Service Area	Description	Capacity	LOS
Evergreen School/Evergreen School District 205	Unincorporated Stevens County	District Area: 5 sq mi Enrollment: 9	40 Students	Student/Teacher: 18 to 1
Kettle Falls Elementary School/Kettle Falls School District 212	Marcus, Kettle Falls and surrounding area	District Area: 14 sq mi Enrollment (Oct. 2006): 862 Student/Teacher: 17 to 1	Not available	Student/Teacher 23 to 1
Kettle Falls Middle School/Kettle Falls School District 212	Marcus, Kettle Falls and surrounding area	District Area: 14 sq mi Enrollment (Oct. 2006): 259 Student/Teacher: 14 to 1	Not available	Student/Teacher 23 to 1
Kettle Falls High School/Kettle Falls School District 212	Marcus, Kettle Falls and surrounding area	District Area: 14 sq mi Enrollment (Oct. 2006): 304 Student/Teacher: 14 to 1	Not available	Student/Teacher 23 to 1
Kettle Falls Homelink/Kettle Falls School District 212	Marcus, Kettle Falls and surrounding area	District Area: 14 sq mi Enrollment (Oct. 2006): 14 Student/Teacher: N/A	Not available	Not available
Loon Lake Elementary/Loon Lake School District 183	Loon Lake and surrounding area	District Area: 5 sq mi Enrollment (Oct. 2006): 147 Student/Teacher: 15 to 1	Not available	Student/Teacher 23 to 1
Loon Lake Homelink/Loon Lake School District 183	Loon Lake and surrounding area	District Area: 5 sq mi Enrollment (Oct. 2006): 55 Student/Teacher: 28 to 1	Not available	Student/Teacher: 28 to 1
Springdale Elementary-Middle School/Mary Walker School District 207	Springdale and surrounding area	District Area: 20 sq mi Enrollment: 285	350 Students	Student/Teacher 23 to 1
Mary Walker High School/Mary Walker School District 207	Springdale and surrounding area	District Area: 20 sq mi Enrollment: 185	275 Students	Student/Teacher 23 to 1
Mary Walker Alternative High School/ Mary Walker School District 207	Springdale and surrounding area	District Area: 20 sq mi Enrollment: 5 Student/Teacher: 5 to 1	Not available	Student/Teacher 23 to 1
Springdale Academy/Mary Walker School District 207	Springdale and surrounding area	District Area: 20 sq mi Enrollment (Oct. 2006): 10 Student/Teacher: N/A	Not available	Not available
Partner Parent Program/Mary Walker School District 207	Springdale and surrounding area	District Area: 20 sq mi Enrollment (Oct. 2006): 102 Student/Teacher: N/A	Not available	Not available

School Facilities				
Facility/Responsible Agency	Service Area	Description	Capacity	LOS
Northport Elementary School/Northport School District 211	Northport and surrounding area	District Area: 31 sq mi Enrollment (Oct. 2006): 111 Student/Teacher: 16 to 1	Not available	Student/Teacher 23 to 1
Northport High School/Northport School District 211	Northport and surrounding area	District Area: 31 sq mi Enrollment (Oct. 2006): 80 Student/Teacher: 10 to 1	Not available	Student/Teacher 23 to 1
Onion Creek Elementary/Onion Creek School District 30	Unincorporated Stevens County	District Area: 5 sq mi Enrollment (Oct. 2006): 37 Student/Teacher: 8 to 1	Not available	Student/Teacher 23 to 1
Summit Valley School/Summit Valley School District 202	Unincorporated Stevens County	District Area: 5 sq mi Enrollment (Oct. 2006): 99 Student/Teacher: 13 to 1	Not available	Student/Teacher 23 to 1
Valley Elementary and Middle School/Valley School District 70	Valley and surrounding area	District Area: 11 sq mi Enrollment (Oct. 2010): 242 Student/Teacher: 13 to 1	Not available	Student/Teacher 13 to 1
Columbia Virtual Academy/Valley School District 70	Statewide	Statewide Enrollment (Oct. 2010): 1,019 Student/Teacher: N/A	Not available	Not available
Paideia High School/Valley School District 70	Host District of Interdistrict Cooperative serving Valley, Loon Lake, Summit Valley, Orient and Orondo School Districts	Five Cooperative Member Districts Enrollment (Oct. 2010): 14	Not available	Not available
VL Transport Center/Valley School District 70	Host District of Interdistrict Cooperative serving Valley, Loon Lake and surrounding area	Student Transportation Facility	N/A	N/A
Wellpinit Elementary School/Wellpinit School District 49	Spokane Reservation	District Area: 13 sq mi Enrollment (Oct. 2006): 162 Student/Teacher: 12 to 1	Not available	Student/Teacher 23 to 1
Wellpinit Middle School/Wellpinit School District 49	Spokane Reservation	District Area: 13 sq mi Enrollment (Oct. 2006): 78 Student/Teacher: 9 to 1	Not available	Student/Teacher 23 to 1
Wellpinit High School/Wellpinit School District 49	Spokane Reservation	District Area: 13 sq mi Enrollment (Oct. 2006): 98 Student/Teacher: 5 to 1	Not available	Student/Teacher 23 to 1

School Facilities

Facility/Responsible Agency	Service Area	Description	Capacity	LOS
Wellpinit Alliance High School/Wellpinit School District 49	Spokane Reservation	District Area: 13 sq mi Enrollment (Oct. 2006): 193 Student/Teacher: N/A	Not available	Student/Teacher 23 to 1
Wellpinit-Fort Semco High School/Wellpinit School District 49	Spokane Reservation	District Area: 13 sq mi Enrollment (Oct. 2006): 94 Student/Teacher: 24 to 1	Not available	Student/Teacher 23 to 1

4 Needs

Population Forecast

County Including Incorporated Areas

2012 Base Year	2014 1 st Year of CFP	2019 6 th Year of CFP
44,036	44,705	45,222

County-Unincorporated Only

2012 Base Year	2014 1 st Year of CFP	2019 6 th Year of CFP
34,285	34,121	34,570

Future Needs

Public Safety Facilities

SC Sheriff	New jail facility is needed. Additional office space needed. New pole building constructed to house command vehicle – completed 2009 Impound yard fencing project – completed 2010
Martin Hall	Improvements to the Martin Hall Juvenile Detention Facility – video conference <i>and surveillance</i> equipment

Government Structures/Offices

Replacement of sidewalks around the courthouse and adjacent to the E911 Center to meet ADA standards was completed in 2012 in coordination with the City of Colville's waterline replacement project. This also included replacing lawn irrigation and repairing landscaping along the new sidewalks.

In conjunction with the installation of the new water line to the courthouse, a separate water meter was installed for the lawn irrigation system in order to reduce the water usage costs.

Upgrading restrooms on the first floor of the courthouse to meet ADA standards *was completed in 2013*. This project was partially funded by a \$40,000 grant from the Department of Archaeology and Historic Preservation.

Northeast Washington Alliance Counseling Services leased a new building in Republic in 2012 to accommodate its Ferry County operations. The new building houses the personnel and equipment for the programs previously located in three separate buildings. *In 2013, a 20KW propane generator was installed to support the data center in this leased building.*

In 2011, a backup data center was created at the NE Washington Fairgrounds Ag Trade Center, which included building a secure room and installing a four-ton air conditioning unit. Disaster recovery equipment storage room was built at the pavilion. *In 2013, a 100KW natural gas generator was installed to support the backup data center.*

Video surveillance equipment for courthouse and jail security completed in 2011 and extended video coverage in 2012.

Courthouse boiler will be evaluated for replacement in 2014. *Stevens County entered into an Interagency Agreement (IAA) with the Department of Enterprise Services (DES) to provide future Energy/Utility Conservation Project Management and Monitoring services to the County.*

In 2013, new fiber optic utility was installed to connect the county network to the Public Works building, NE Washington Alliance Counseling Services building, backup data center at the Ag Trade Center, and the Sheriff's Ambulance building/Elections center.

A new fiber optic utility and network switch was installed to extend the county network from the Courthouse to the old Avista building in 2011.

ADA door openers were installed in the Courthouse handicap bathroom and on the Assessor's office door in 2011.

Security fencing was installed for the new cooling tower, courthouse generator and backup data center in 2011.

In a joint project with Spokane County, the Stevens County Scoop Mountain communications site was refurbished to install a new 140' tower and communications building in 2011.

The courthouse fire alarm system was replaced in 2012.

With the purchase of the former Avista facility just south of the Stevens County Courthouse, the Commissioners' Hearing Room was converted into a second courtroom for Superior Court during 2012.

Prior to the Commissioners moving to the old Avista building, a small part of the office space was remodeled to accommodate the administrative staff, Commissioners' meetings, and the Board of Equalization hearings.

In 2012 BLRB Architects conducted a facilities condition assessment and feasibility study on the new acquired administration building (old Avista building). Upon completion of the study, BLRB created a set of drawings and draft bid documents for the future remodeling of this building.

In 2012 indoor and outdoor overhead lighting at the NE Washington Fairgrounds was replaced with energy efficient lights and was funded by a Washington Fair grant and Avista energy rebates.

New energy efficient lighting for the Fairgrounds arena is being planned for 2013/2014 and will be mounted on the new poles being installed by the PUD for their fiber optic project.

A feasibility study in 2013 was conducted by BLRB Architects for the possible remodel of the old Ambulance building for use as administrative office space. *As a result of the study, a new roof was installed on this building.*

In 2012 the Assessor's office was remodeled to move the appraisers from the basement to the first floor.

In 2013, a new office was constructed for the District Court Judge and the former office was remodeled for the Stevens County Law Library.

Educational/Recreational Facilities

NE Washington Fairgrounds	Ongoing / continual maintenance and repairs
City of Colville	Electrical and food service equipment for the concession area of the Rotary Pavilion in the Colville City Park.
Town of Springdale	Additional funding has been obtained for work on the Town of Springdale's beautification project, expressly the pond.
Stevens County	<i>Reparation of the Stevens County Fish Hatchery in Colville</i>

Transportation Facilities

Future transportation needs are identified in the Transportation Improvement Plan, attached as Appendix C to the adopted comprehensive plan.

Solid Waste Facilities

A minor expansion to the maintenance facility at the landfill is being considered.
--

Water Facilities

49 Degrees	Upgrades to the existing system to continue to operate in the Green Permit Category.
Hunters	The Hunters Water District (HWD) has completed the water treatment facility and replaced water lines. The actual water right transfer with the school is under review by the Stevens County Water Conservancy Board and will be followed by Department of Ecology review prior to approval. Using a Planning-Only Grant from the Department of Commerce, HWD will be preparing a booster station project report which will result in a plan to improve the reliability of water service and increase the water pressure. The report should be done within 6-12 months, but with the limit of one General Purpose CDBG application per county/per year, Hunters will not be able to apply for funding until 2014.
Arden	The Arden Mill does not have any plans at this time expand or increase its population of employees.
Arden Hills Water	The system is approved for thirty-one (31) hook ups. Existing lots have connections and will be connected as the lots are developed.
Springdale	The Town of Springdale has secured funding and will be calling for bids for repair, enhancement and expansion of its water system. Funding has also been secured for overlay of streets following completion of the project.
Clayton area	Stevens Public Utility District (PUD) is working with Sunshine Disposal on securing funding for construction of a water storage facility in southern Stevens County

Sanitary Sewer Facilities

Hunters	The Hunters Water District, also known as the Hunters Water and Sewer District, plans on hooking up to the school, get grants to financially finish the sewer plans for the town..
Springdale	The Town of Springdale has secured funding for upgrading the lift station; they will be calling for bids in 2011.
Suncrest area	Stevens Public Utility District (PUD) has purchased property and is now seeking funding for a feasibility study for locating a sewage treatment facility in southern Stevens County.

Stormwater Facilities - None identified

Fire Facilities

Fire District #1	Encompassing the largest concentration of people of any fire district in Stevens County. District 1 also is the only district to employ full-time personnel and house volunteers over night. Fire District 1 continues to grow and has the potential for significant growth in the next 5 years. Replacing the outdated fire stations in Suncrest and Loon Lake, and the administrative headquarters of the District, is the #1 Capital Facilities priority. Commissioners are sponsoring a 2013 General Purpose grant application for Fire District #1 Station Construction Project.
Fire District #2	Area is growing, with significant new homes being built and property being divided. Will need to look at doing medical response and add structural (additional) protection capacity. Five-year plan has shown an increase is needed in inside heated storage for fire apparatus.
Fire District #6	Possible need for additional fire stations as more people annex into District. There is a need for urban interface planning and fire proofing. Education of landowners, etc.
Fire District #12	This area is continuing to grow. Another fire station will be needed supporting the Daisy Area and the east part of the district within 10 years. Present amount of equipment/vehicles are adequate for summer wildland support. Additional station mentioned will be needed to provide adequate winter structure protection in the future.

Library Facilities

Chewelah Library	Add on to the library in the future depending on growth. 1,500 more people expected. Remodeled last year, interior renovation.
------------------	--

School Facilities

Columbia/Evergreen	Neither Columbia nor Evergreen are expecting an influx of students.
Chewelah SD	Replace Jenkins Middle School
Mary Walker SD	ESL Program (Russian population) Continue improvement on educational delivery. Addition of 3-5 year olds. Summer usage of facilities.

5 Proposed Facilities/Financing

Public Safety Facilities

Agency	Project/Location	Construction Year	Federal/State/Local	Cost Estimate in Thousands	
				Fund Name	Total
Sheriff	New Jail/Unk.	As funding is available	Unknown	Unk.	Unk.
<i>Sheriff</i>	<i>Courthouse/ Remodel I.S. Dept current office space for Sheriff's Office</i>	<i>2014</i>	<i>Local</i>	<i>Unk.</i>	<i>Unk.</i>

Government Structures/Offices

Agency	Project/Location	Construction Year	Federal/State/Local	Cost Estimate in Thousands	
				Fund Name	Total
Commissioners	Old Avista Building Complex Remodel	2015/16	Local	Unk.	Unk.
<i>Information Services Dept</i>	<i>Old Ambulance Building Remodel</i>	<i>2014</i>	<i>Local</i>	<i>Unk.</i>	<i>Unk.</i>
<i>Assessor</i>	<i>Remodel Detectives current office space for Assessor</i>	<i>2014</i>	<i>Local</i>	<i>Unk.</i>	<i>Unk.</i>

Recreation Facilities

None Identified

Transportation Facilities

Proposed transportation facilities are identified in the Transportation Improvement Plan, attached as Appendix C to the adopted comprehensive plan.

Solid Waste Facilities

None Identified

Water Facilities

Agency	Project/Location	Construction Year	Federal/State/Local	Cost Estimate in Thousands	
				Fund Name	Total
49 Degrees North	Installation of a 250,000-500,000 gallon reservoir	2008-2015	Private	N/A	\$600,000
49 Degrees	Upgrades and	2008-2015	Private	N/A	\$125,000

North	relocation of pumping and treatment facility				
49 Degrees North	Upgrade of water transmission piping	2008-2015	Private	N/A	\$150,000
49 Degrees North	Possible upgrade and relocation of source withdrawal	2008-2015	Private	N/A	\$25,000
Hunters	School Water Right Transfer	2010-2011	Washington State Dept. of Commerce	Planning Only	\$24,000
Hunters	Replace AC pipes / School Hookup	2011-2013	Washington State Dept. of Commerce	General Purpose	\$634,600

Sanitary Sewer

Agency	Project/Location	Construction Year	Federal/State/Local	Cost Estimate in Thousands	
				Fund Name	Total
49 Degrees North	Upgrade of collection system	2008-2015	Private	N/A	\$35,000
49 Degrees North	Installation of new treatment	2008-2015	Private	N/A	\$1,250,000
49 Degrees North	Installation of new surface or subsurface disposal	2008-2015	Private	N/A	\$250,000
Hunters	School Hookup	Ongoing	N/A	N/A	N/A

Stormwater Facilities

None Identified

Fire Facilities

Agency	Project/Location	Construction Year	Federal/State/Local	Cost Estimate in Thousands	
				Fund Name	Total
Fire District 2	New Fire Station/Hunters	Unk	Unk	Unk	\$500,000
Fire District 2	Class A Fire Trucks (2)/Hunters	Unk	Unk	Unk	\$500,000
Fire District 12	New Station/Daisy Area	By 2015	Local	FPD Capital Funds/Grants	\$300,000

Library Facilities

None Identified

School Facilities

Agency	Project/Location	Construction Year	Federal/State/Local	Cost Estimate in Thousands	
				Fund Name	Total
Columbia/Evergreen SD	Columbia Remodel	2009-2011	Local	Bond	\$9,000,000
Chewelah SD	School Construction/Chewelah	2010	Local	School Construction	\$20,000,000
Mary Walker SD	Roof Repair	2007-continued	Local	Basic Ed	\$100,000

6 Capital Financing Plan

CURRENT PROJECTS, FUNDING NEEDS BY YEAR AND SOURCES OF FINANCING

	2014	2015	2016	2017	2018	2019
Martin Hall - Juvenile Detention; Stevens County (1996 debt refinanced in 2005)	\$125,978	\$125,807	\$126,893	\$0	\$0	
Other Counties	\$314,947	\$314,518	\$317,232	\$0	\$0	
Other Stevens County Projects - (1994 debt refinanced in 2002)						
Old Avista Bldg Paid Avista/re-financed in 2012	\$35,825	\$35,300	\$34,700	\$38,950	\$38,050	\$37,100
Total	\$476,750	\$475,625	\$478,825	\$38,950	\$38,050	\$38,050
Repayment source:	REET	REET	REET	REET	REET	REET
<i>Solid Waste Landfill (1995 debt refinanced in 2005)</i>	\$ -	\$ -	\$ -			
<i>New Landfill – PWT (2006)</i>	\$138,450	\$137,800	\$137,150			
Total	\$138,450	\$137,800	\$137,150			
Repayment source:	PW Trust Fund	PW Trust Fund	PW Trust Fund			
New Ambulance Building	\$ -	\$ -	\$ -			
Bank of America*	\$34,507	\$34,507	\$34,507	\$34,507	\$34,507	\$34,507
Total	\$34,507	\$34,507	\$34,507	\$34,507	\$34,507	\$34,507
Repayment source:	Ambulance Fund	Ambulance Fund	Ambulance Fund	Ambulance Fund	Ambulance Fund	Ambulance Fund
Fish Hatchery Project	\$10,389.16	\$10,389.16	\$10,389.16	\$10,389.16	\$10,389.16	\$10,389.16
Total	\$10,389.16	\$10,389.16	\$10,389.16	\$10,389.16	\$10,389.16	\$10,389.16

7 Reassess Land Use

Periodic Reassessment and Assurance of Internal Consistency

During each annual budget process, and not later than December 1 of each year, the Planning Director shall reassess the land use element and other elements of the plan in light of the evolving proposed capital facilities plan for that year. If the Planning Director determines the probable funding for capital facilities at any time is insufficient to meet existing needs, the Planning Director shall initiate an expedited public process to be included in the budget hearings, which shall include the reassessment of the land use element, funding possibilities and levels of service. As a result of such reassessment, appropriate action must be taken to ensure the internal consistency of the land use and capital facilities portions of the plan.

Affect On Pending Applications

Appropriate actions taken by the Board of County Commissioners to ensure internal consistency of the land use and capital facilities portions of the plan due to insufficient funding for capital facilities shall take effect immediately upon passage by the Board and applied to all pending land use applications which have not “vested” as determined by the Prosecuting Attorney’s analysis of then existing land use statutory and case law.